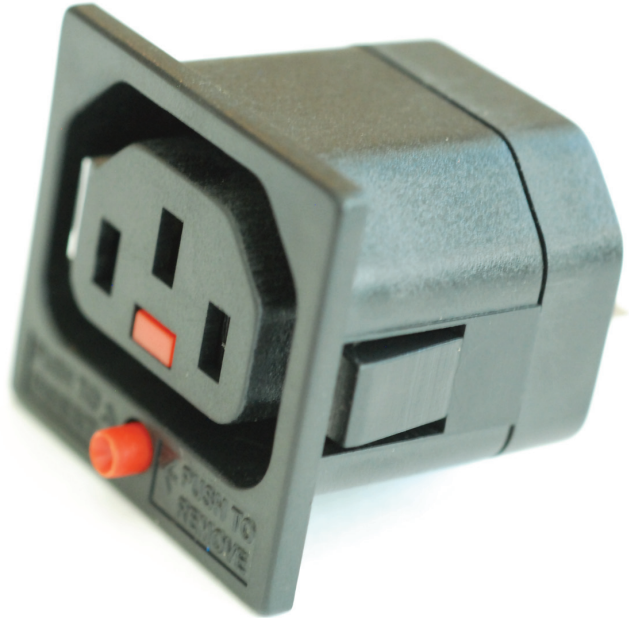


Appliance Couplers

Appliance Outlet Type BTSCI3L/I

- Snap-in mounting from front
- Solder terminal or quick connect from single terminal
- Protection Class I
- Integral plug retention feature



Technical Data

- Rated current/voltage 10A /250VAC
- Insulation resistance 10M Ω (500VDC, 1 Min.)
- Dielectric Strength: 2KV (50 Hz, 1 Min.) to accessible surfaces
- Material: Socket – Thermoplastic, black, UL94V-0

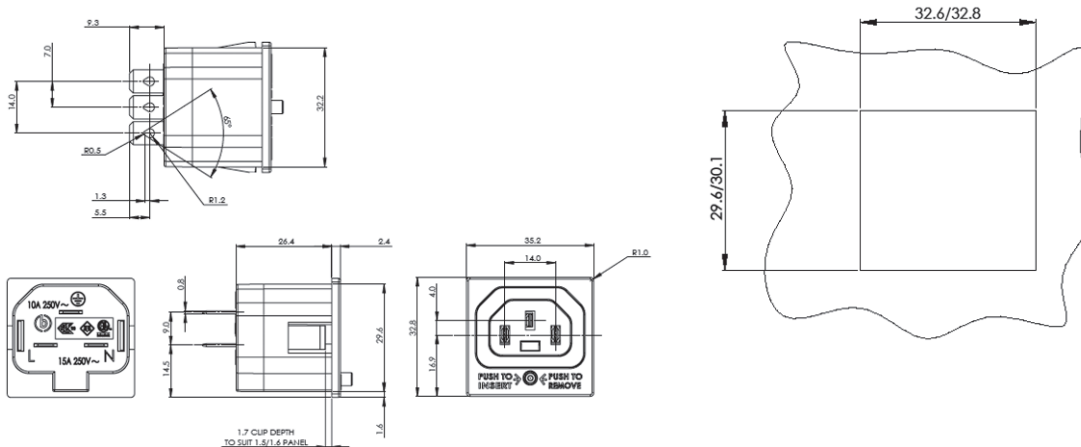
Standards

- IEC/EN 60320-2-2/F

Approvals

- ENEC (10 A/250VAC)
- ETLus (15 A/250VAC)

Dimensional Data & Panel Preparation



Part Ref

- BTSCI3L/IB
- BTSCI3L/IW

Description

- Black IEC320 Snap in 1.5mm Panel Thickness
- White IEC320 Snap in 1.5mm Panel Thickness

Terminal Type

- Quick Connect/Solder 6.3 x 0.8 mm
- Quick Connect/Solder 6.3 x 0.8 mm