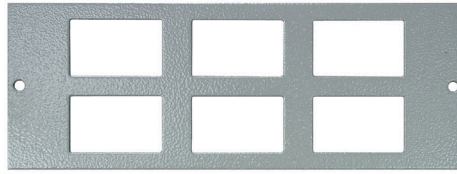


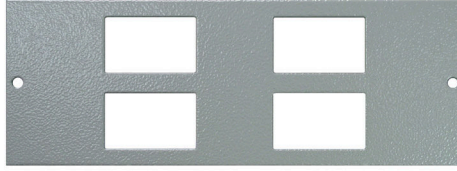
FBP-STO279 [1]
2 x 50mm Euro Module
Plate



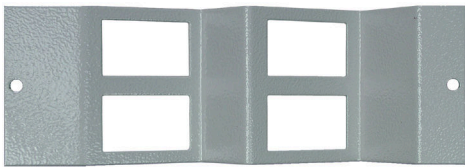
FBP-STO280
6 Way Data Plate
6 x 37x22mm LJ6C Module
Cutouts



FBP-STO282
Blank Plate



FBP-STO285
4 Way Data Plate
4 x 37x22mm LJ6C Module
Cutouts



FBP-STO285/W
4 Way Data Wave Plate
4 x 37x22mm LJ6C Module
Cutouts



FBP-STO290/RH
Right Hand Twin Switched
Sockets



FBP-STO290/LH
Left Hand Twin Switched
Sockets



FBP-STO405
Triple Unswitched
Sockets

Product Information

Product Type
Cavity & Screed Floor Box Plates

Suitable For:
FB-TFB4, FBP-TSB4

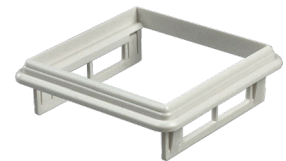
Plate Dimensions
185mm x 68mm

Material
Galvanised Steel

Finish
Leatherette texture Powder Coating

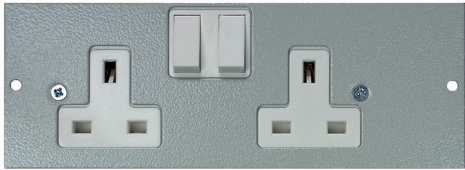
Colour
Equivalent to RAL7035 / Light Grey

Note [1]:
FBP-STO279 is supplied fitted with 2 x 50x50mm Euro collars (see below), to be used in conjunction with listed Socket modules.

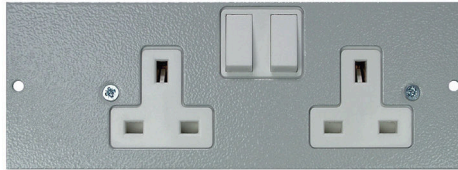


EURO COLLAR

Note [2]:
Side wired twin switched socket plates (FBP-STO290/SW/LH & FBP-STO290/SW/RH) designed specifically for use with FB-TFB/64 floorbox.



FBP-STO290/SW/LH [2]
Left Hand Twin Switched
Sockets (side wired)



FBP-STO290/SW/RH [2]
Right Hand Twin Switched
Sockets (side wired)

Product Information

Product Type
Cavity & Screed Floor Box Plates

Suitable For:
FB-TFB4, FB-TSB4

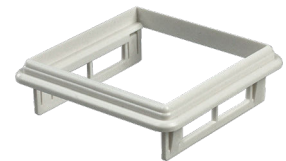
Plate Dimensions
185mm x 68mm

Material
Galvanised Steel

Finish
Leatherette texture Powder Coating

Colour
Equivelant to RAL7035 / Light Grey

Note [1]:
FBP-STO279 is supplied fitted with 2 x 50x50mm Euro collars (see below), to be used in conjunction with listed Socket modules.



EURO COLLAR

Note [2]:
Side wired twin switched socket plates (FBP-STO290/SW/LH & FBP-STO290/SW/RH) designed specifically for use with FB-TFB/64 floorbox.